

AQUATEK[®] Super XA

Crystalline waterproofing coating

Product Description

AQUATEK[®]Super XA is a rigid, cement based coating and dry broadcast system for crystalline waterproofing of concrete through saturation of the capillaries.

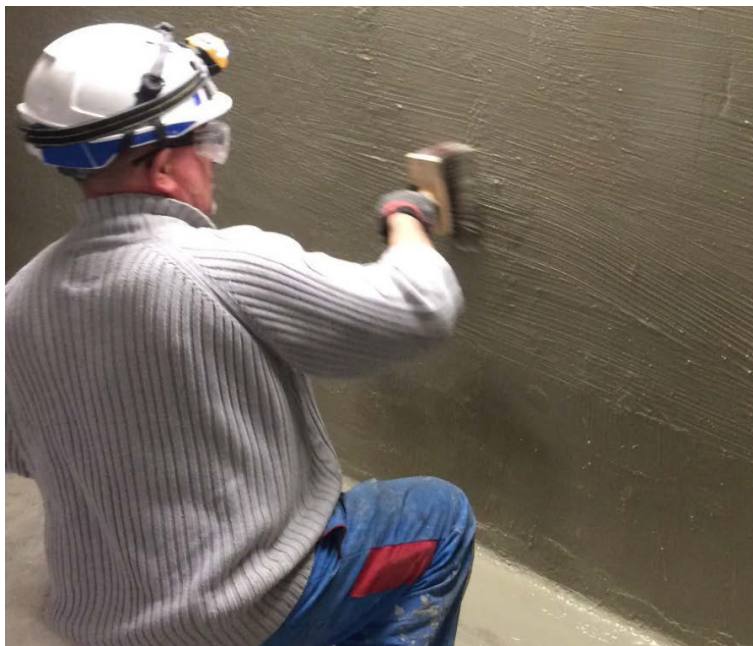
Advantages

- High adhesion and waterproofing performance by saturation of capillaries for long-term waterproofing against negative and positive hydrostatic pressures.
- Fast setting properties for minimal downtime and rapid completion of the application.
- Fast, easy and cost effective application by manual application, spraying or dry broadcasting.

Field of Application

AQUATEK[®]Super XA is suitable for:

- Waterproofing of concrete, internal or external, below and above the ground water table, in horizontal and vertical applications, such as: water reservoirs, tunnels, basements, ponds, etc.
- Dry powder broadcasted waterproofing of concrete floor slabs.



Product Properties

Technical Data/Properties^(*)

AQUATEK® Super XA		
Properties	Unit	Value*
Grain size	[mm]	0-0.5
Application thickness / layer	[mm]	1
Maximum water quantity	[l /20 kg]	12.8
Open time	[min]	≈ 30
Application temperature	[°C]	+5 to +30
Consumption(**) - Vertical applications - Horizontal applications - Dry broadcast applications	[kg/m ²]	≈ 0.75 / layer ≈ 1.2 / layer ≈ 1.0 / layer
Recoat time(***)	[hours]	≈ 1.5
Fresh mortar density	[kg/dm ³]	≈ 2.0
Adhesion to concrete	[MPa]	>2.0
Depth of penetration	[mm]	≥50 after 90 days
Hydrostatic pressure resistance - Positive pressure - Negative pressure	[bar]	≈ 10 ≈ 10
Shelf life	12 Months Stored under cover, clear of the ground, protected from all sources of moisture and frost.	
Packaging	Plastic pails of 20 kg, 27 pails per pallet (540kg)	
Appearance	Grey powder	

(*)Typical values in production control. All tests were executed under a conditioned temperature of 21 °C and 65% RH.

(**)Consumption needs to be estimated by the designer, since it depends on the surface roughness and porosity.

(***)Recoating time depends on ambient conditions and should be applied when the first layer is still green, but is sufficiently cured to take the second coat.

Application

1. Preparation of Substrate

- Substrate preparation has to be according EN 1504-10 part 7.
- The substrate has to be free from dirt, grease, laitance, loose concrete, loose particles or layers which could adversely affect adhesion.
- Remove all damaged concrete and prepare substrate by sand or grid blasting, high pressure water jetting, or other methods until base concrete is exposed, offering sufficient roughness (bond) and open pores.
- The substrate must be pre-wetted with clean water until saturated. The substrate should be damp, but without free standing water.
- The substrate must be frost-free and have a cohesion of minimum 1.5 N/mm².
- Exposed or corroded reinforcement steel needs to be treated with OMNITEK® CPC.
- Damaged areas need to be repaired with a suitable OMNITEK® or BETEC® cement based repair mortar.
- Old concrete needs to be reactivated with OMNITEK® Realk Liquid to allow AQUATEK® Super XA to perform.

2. Mixing

- The product has to be mixed using a suitable forced action mixer (400–600rpm). The mixing head must be completely immersed in the powder.
- Add 4/5 of the required quantity of water into the mixer and mix for 3 minutes. Add the remaining quantity of water. The water content can be varied to obtain the desired consistency. Never use more than the maximum water quantity. Mix for an additional 1 minute until a lump-free, homogeneous mixture is obtained.
- The mixing time depends on the type of mixer. 4 minutes is the minimum.
- Once the mortar is ready mixed, apply immediately. Do not prepare more material than can be used within the open time of the material.
- The material will experience false setting after mixing, remix for 30 seconds every 5 minutes to maintain the open time of the material. Never add more water.

3. Application

- For vertical applications, the material is applied in minimum 2 layers of 1 mm by using a brush or roller. Alternatively suitable spray equipment can be used.
- Apply the first layer on the dampened substrate in a horizontal stroke.
- Apply the second layer in the still fresh, but sufficiently cured, first layer in a vertical stroke.
- Spray applications require brushing of the first layer to properly fill voids and achieve uniformity.
- For horizontal applications, apply the material in minimum 1 layer of 1 mm by using a brush or roller. Alternatively suitable spray equipment can be used.
- For dry powder broadcasting applications, broadcast 1 layer of powder onto the screed with the reinforcement bars for the slab already in place. When the concrete slab is poured and still green, broadcast an additional layer onto the top surface and float into the surface with a power float.
- Do not apply the material if the ambient temperature is below 5°C or expected to fall below 5°C within 24 hours.

4. Curing

- After treatment has to be according EN 13610 in combination with DIN EN 1045-3.
- In warm or windy conditions protect the applied material from dehydration by mist-spraying with clean water or protective tarpaulins until the initial set has taken place.
- In cold conditions cover with insulated tarpaulin, polystyrene or other insulating material. Protect surfaces against frost and rain until final set has taken place.
- In cold, humid or unventilated areas it can be necessary to allow for a longer curing period, or to introduce forced air movement to avoid condensation. Never use dehumidifiers during the curing period or within 28 days after application.

5. Cleaning and maintenance

- Mixing and application equipment should be cleaned immediately with clean water. Hardened material needs to be removed mechanically.

6. Special remarks

- Gypsum based plasters or water vapour impermeable coatings cannot be applied on AQUATEK® Super XA when constant negative hydrostatic pressure is present.
- Negative water pressure must be removed during application to obtain a good adhesion of the material.
- As result of limited wear-resistance AQUATEK® Super XA allows restricted pedestrian traffic on horizontal surfaces. In case of refilling soil, the surface needs to be suitably protected against mechanical damage.
- Condensation may occur after application of AQUATEK® Super XA in poorly ventilated and damp areas. Increasing the ventilation and/or plastering with a lightweight cement plaster can alleviate this.
- Cementitious materials can lead to incompatibilities under certain conditions in combination with non-ferrous metals (such as aluminium, copper, zinc).
- Low temperatures delay the setting of the material. High temperatures accelerate the curing and decrease the open time of the material.
- If AQUATEK® Super XA is used in potable water tanks or fish tanks, the surface should be repeatedly washed with clean water before use.
- AQUATEK® Super XA is not suitable for prolonged contact with hydrocarbons such as petrol, fuel oil, etc.

Health & Safety

AQUATEK® Super XA is a product based on cement and can therefore cause burns to skin and eyes, which should be protected during use. Wear gloves and protective eye shields. Wearing a dust mask is advised. Treat splashes to eyes and skin immediately with clean water. Consult a doctor when irritation continues. If accidentally ingested, drink water and consult a doctor. Users must comply with all risk and safety phrases. MSDS's can be obtained from GCP Applied Technologies or from our website. GISCODE ZP1.

WWW.

gcpat.sg | For technical information: asia.enq@gcpat.com

We hope the information here will be helpful. It is based on data and knowledge considered to be true and accurate, and is offered for consideration, investigation and verification by the user, but we do not warrant the results to be obtained. Please read all statements, recommendations, and suggestions in conjunction with our conditions of sale, which apply to all goods supplied by us. No statement, recommendation, or suggestion is intended for any use that would infringe any patent, copyright, or other third party right.

Betec® is a trademark, which may be registered in the United States and/or other countries, of GCP Applied Technologies Inc. This trademark list has been compiled using available published information as of the publication date and may not accurately reflect current trademark ownership or status.

© Copyright 2017 GCP Applied Technologies Inc. All rights reserved.

GCP Applied Technologies Inc., 62 Whittemore Avenue, Cambridge, MA 02140 USA.

In UK, GCP Applied Technologies, 580-581, Ipswich Road, Slough, Berkshire, SL 1 4EQ, EQ.

This document is only current as of the last updated date stated below and is valid only for use in Singapore. It is important that you always refer to the currently available information at the URL below to provide the most current product information at the time of use. Additional literature such as Contractor Manuals, Technical Bulletins, Detail Drawings and detailing recommendations and other relevant documents are also available on www.gcpat.sg. Information found on other websites must not be relied upon, as they may not be up-to-date or applicable to the conditions in your location and we do not accept any responsibility for their content. If there are any conflicts or if you need more information, please contact GCP Customer Service.

Last Updated: 2021-02-05

gcpat.sg/solutions/products/aquatek-super-xa